



NPN Transistor Bare Die - BC549

Rev 1.0

08/01/19

General purpose low noise medium power amplifier or switch in bare die form

Complement to PNP BC559

Features:

- Gain graded
- Low saturation voltage
- Well suited for low noise amplifier applications
- High reliability gold back metal
- High reliability tested grades for Military + Space

Ordering Information:

The following part suffixes apply:

- No suffix - MIL-STD-750 /2072 Visual Inspection
- "H" - MIL-STD-750 /2072 Visual Inspection + MIL-STD-38534 Class H LAT
- "K" - MIL-STD-750 /2072 Visual Inspection + MIL-STD-38534 Class K LAT

LAT = Lot Acceptance Test.

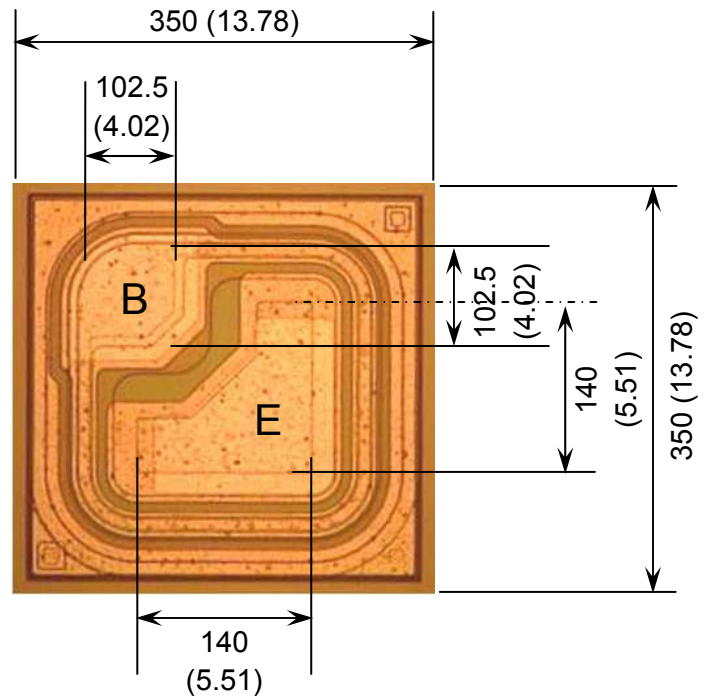
For further information on LAT process flows see below.

www.siliconsupplies.com/quality/bare-die-lot-qualification

Supply Formats:

- Default – Die in Waffle Pack (400 per tray capacity)
- Sawn Wafer on Tape – Specific request
- Unsawn Wafer – Specific request
- With additional electrical selection – Specific request
- Sawn as pairs or adjacent pair pick – Specific request

Die Dimensions in μm (mils)



E = EMITTER **B** = BASE

DIE BACK = COLLECTOR

Mechanical Specification

Die Size (Excluding Saw Street)	350 x 350 13.78 x 13.78	μm mils
Base Pad Size	102.5 x 102.5 4.02 x 4.02	μm mils
Emitter Pad Size	96 x 96 5.51 x 5.51	μm mils
Die Thickness	230 (± 15) 9.06 (± 0.59)	μm mils
Top Metal Composition	Al - 1.3 μm	
Back Metal Composition	AuAs - 0.9 μm	





NPN Transistor Bare Die - BC549

Rev 1.0
08/01/19

Absolute Maximum Ratings $T_A = 25^\circ\text{C}$ unless otherwise stated

PARAMETER	SYMBOL	VALUE	UNIT
Collector-Base Voltage	V_{CB0}	30	V
Collector-Emitter Voltage	V_{CEO}	30	V
Emitter-Base Voltage	V_{EBO}	5	V
Collector Current	I_C	100	mA
Junction Temperature	T_J	150	$^\circ\text{C}$
Storage Temperature	T_{stg}	-55 to 150	$^\circ\text{C}$

Electrical Characteristics $T_A = 25^\circ\text{C}$ unless otherwise stated

PARAMETER	SYMBOL	CONDITIONS	MIN	TYP	MAX	UNIT	
OFF CHARACTERISTICS							
Collector-Base Breakdown Voltage	$V_{(BR)CBO}$	$I_C = 50\mu\text{A}, I_E = 0$	30	-	-	V	
Collector-Emitter Breakdown Voltage	$V_{(BR)CEO}$	$I_C = 1\text{mA}, I_B = 0$	30	-	-	V	
Emitter-Base Breakdown Voltage	$V_{(BR)EBO}$	$I_E = 50\mu\text{A}, I_C = 0$	6	-	-	V	
Collector Cut-off Current	I_{CBO}	$V_{CB} = 30\text{V}, I_E = 0$	-	-	15	nA	
ON CHARACTERISTICS							
Forward-Current Transfer Ratio ¹	h_{FE}	BC549	$V_{CE} = 5\text{V}, I_C = 2\text{mA}$	110	-	800	-
		BC549A		110	-	220	-
		BC549B		200	-	450	-
		BC549C		420	-	800	-
				$V_{CE} = 5\text{V}, I_C = 100\text{mA}$	-	180	-
Collector-Emitter Saturation Voltage	$V_{CE(sat)}$	$I_C = 10\text{mA}, I_B = 0.5\text{mA}$	-	90	250	mV	
		$I_C = 100\text{mA}, I_B = 5\text{mA}$	-	200	600	mV	
Base-Emitter Saturation Voltage	$V_{BE(sat)}$	$I_C = 10\text{mA}, I_B = 0.5\text{mA}$	-	700	-	mV	
		$I_C = 100\text{mA}, I_B = 5\text{mA}$	-	900	-	mV	
Base-Emitter On Voltage	$V_{BE(on)}$	$I_C = 2\text{mA}, V_{CE} = 5\text{V}$	580	660	700	mV	
		$I_C = 10\text{mA}, V_{CE} = 5\text{V}$	-	-	720	mV	
SMALL SIGNAL CHARACTERISTICS²							
Transition Frequency ³	f_T	$V_{CE} = 5\text{V}, I_C = 10\text{mA}, f = 100\text{MHz}$	150	300	-	MHz	
Output Capacitance	C_{obo}	$V_{CB} = 10\text{V}, I_E = 0, f = 1\text{MHz}$	-	3.5	6	pF	
Input Capacitance	C_{ibo}	$V_{BE} = 10\text{V}, I_C = 0, f = 1\text{MHz}$	-	9	-	pF	
Noise Figure	NF	$V_{CE} = 5\text{V}, I_C = 200\mu\text{A}, f = 1\text{KHz}, R_G = 2\text{K}\Omega$	-	1.2	4	dB	

Note 1: Pulse Test: Pulse Width $\leq 300\mu\text{s}$, Duty Cycle $\leq 2\%$

Note 2: Not production testing in die form. Characterized by chip design and tested in package

Note 3: f_T is defined as the frequency at which $|h_{fe}|$ extrapolates to unity.





NPN Transistor Bare Die – BC549

Rev 1.0
08/01/19

Typical Characteristics $T_A = 25^\circ\text{C}$ unless otherwise stated

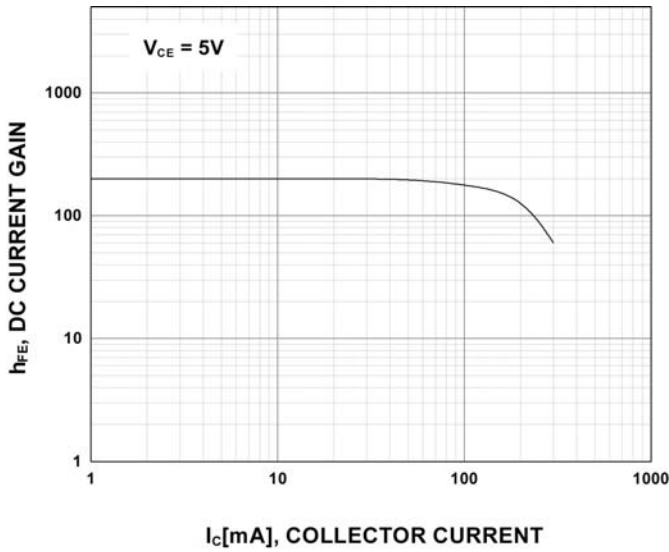


Figure 1 – DC Current Gain

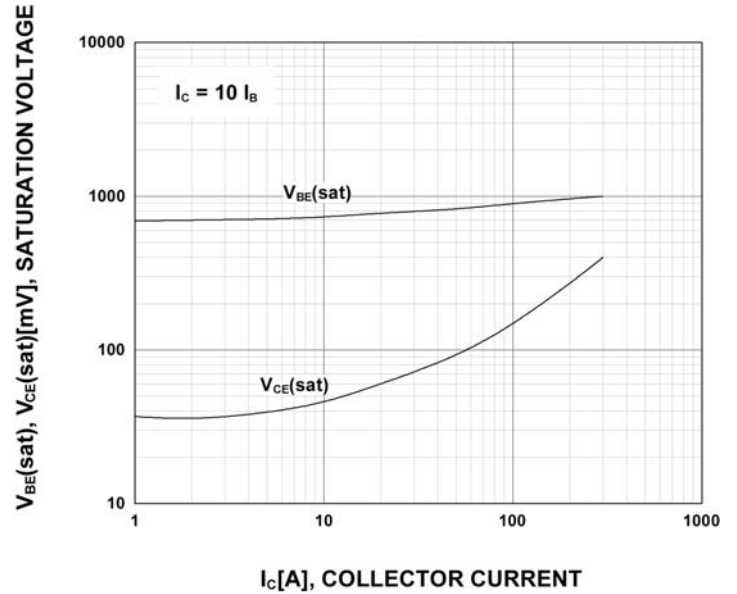


Figure 3 – Base-Emitter Saturation Voltage versus Collector-Emitter Saturation Voltage

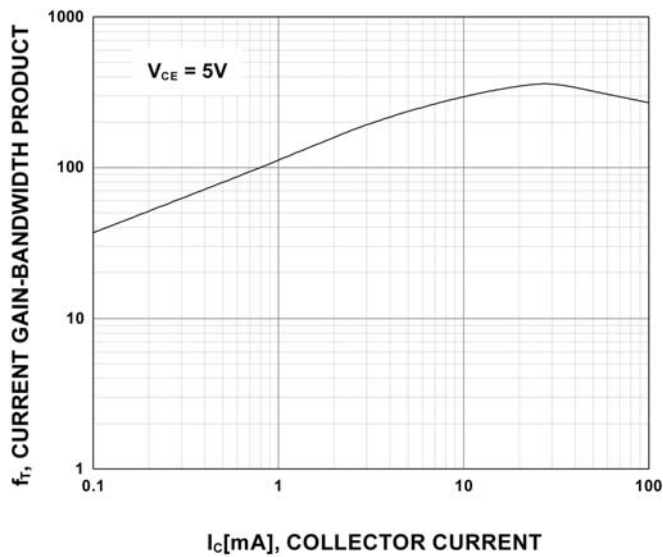


Figure 3 – Current Gain Bandwidth Product

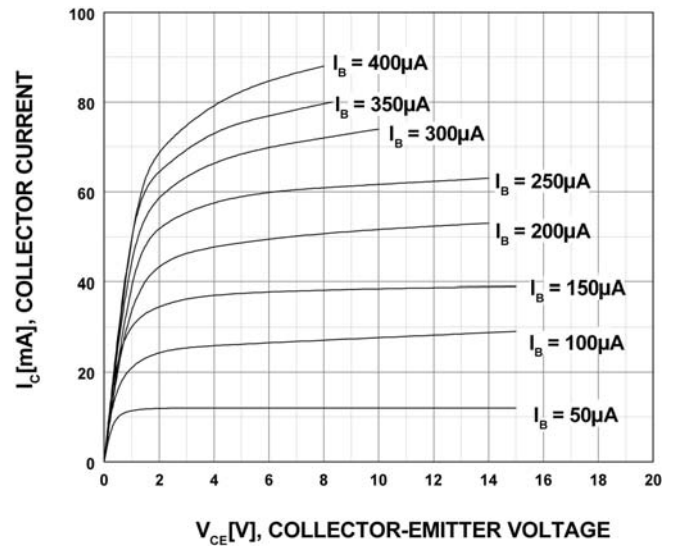


Figure 4 – Static Characteristics





NPN Transistor Bare Die – BC549

Typical Characteristics $T_A = 25^\circ\text{C}$ unless otherwise stated

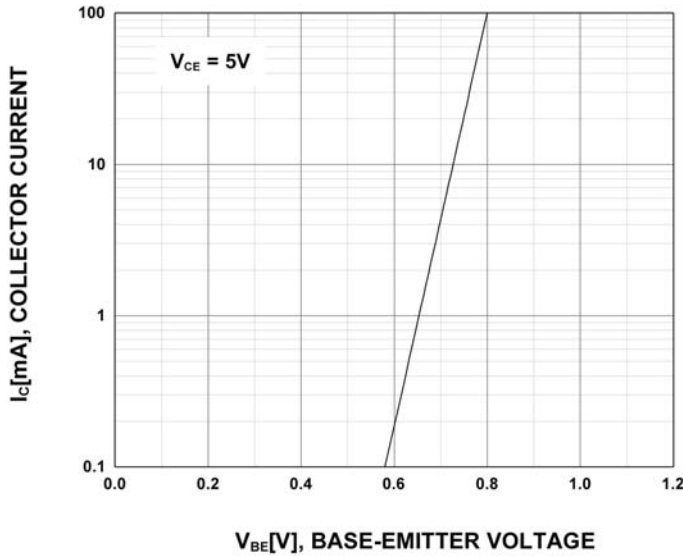


Figure 5 – Transfer Characteristic

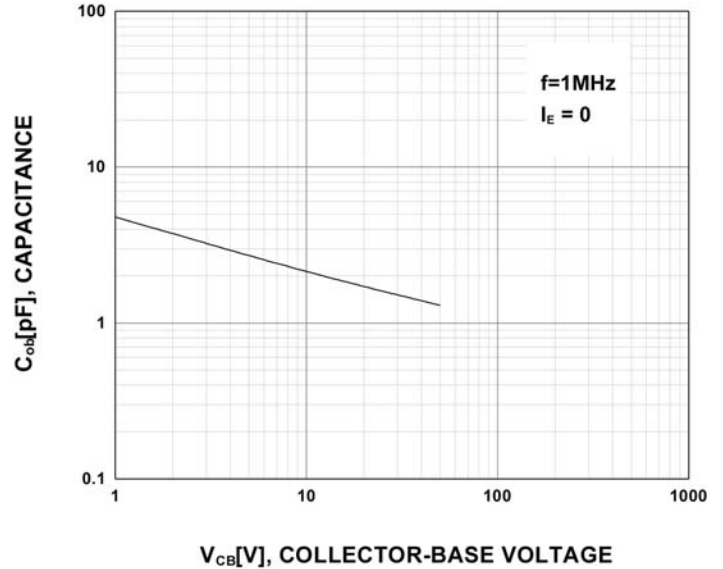


Figure 6 – Output Capacitance

DISCLAIMER: The information given in this document shall in no event be regarded as a guarantee of conditions or characteristics. With respect to any examples or hints given herein, any typical values stated herein and/or any information regarding the application of the device, Silicon Supplies Ltd hereby disclaims any and all warranties and liabilities of any kind.

LIFE SUPPORT POLICY: Silicon Supplies Ltd components may be used in life support devices or systems only with the express written approval of Silicon Supplies Ltd, if a failure of such components can reasonably be expected to cause the failure of that life support device or system or to affect the safety or effectiveness of that device or system. Life support devices or systems are intended to be implanted in the human body or to support and/or maintain and/or protect human life. If they fail, it is reasonable to assume that the health of the user or other persons may be endangered.

