

EPIGAP Optronik GmbH

Koepenicker Str. 325b
D-12555 Berlin
Fon: +49 (0)30 657637 60
Fax: +49 (0)30 657637 70
sales@epigap-optronic.de



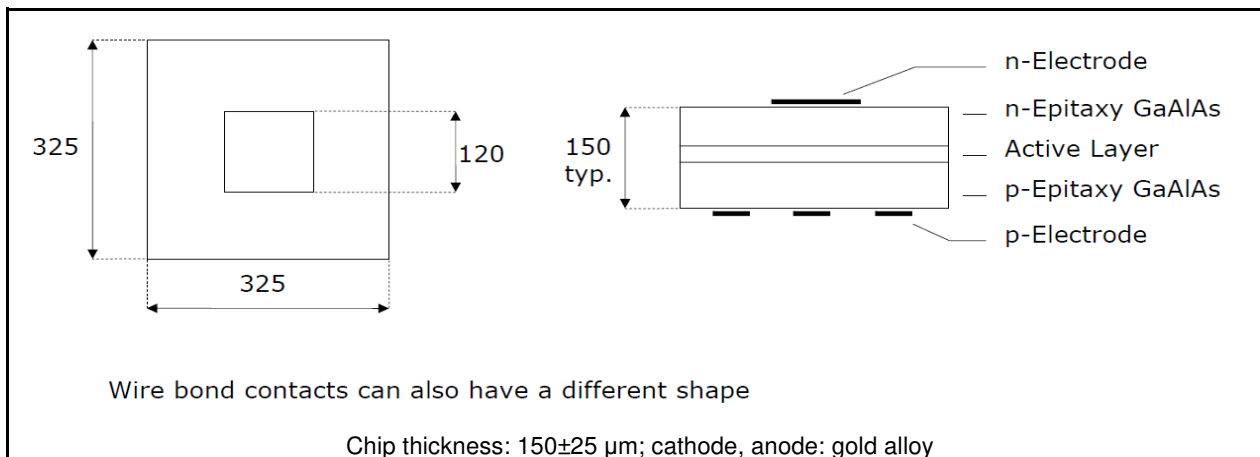
Data Sheet

LED Chip deep red

EOLC-690-25D

Rev. 04, 2017

Radiation	Type	Electrodes
Deep red	AlGaAs/AlGaAs, DDH	N (cathode) up



Optical and Electrical Characteristics

T_{amb} = 25°C, unless otherwise specified

Parameter	Test cond.	Symbol	Min	Typ	Max	Unit
Forward voltage	I _F =20 mA	V _F		1.85	2.2	V
Reverse current	V _R =5 V	I _R			100	µA
Radiant power*	I _F =20 mA	Φ _e	2	2.8		mW
Peak wavelength	I _F =20 mA	λ _p	680	690	700	nm
FWHM	I _F =20 mA	Δλ _{0.5}		23		nm
Switching time	I _F =20 mA	t _r , t _f		50; 35		ns

*Measured on bare chip on TO-18 header

Packing

Chips on adhesive film with wire bond side up

Art. No. 112 023



We reserve the right to make changes to improve technical design and may do so without further notice. Parameters can vary in different applications. All operating parameters must be validated for each customer application by the customer.