



# Linear Voltage Regulator – 79L05AC

**Negative Fixed 5V Voltage Regulator in bare die form**

**Rev 1.0**  
**11/15/19**

## Description

79L05AC 5V fixed 3-terminal negative voltage regulator delivers up to 100mA output current & is equipped with internal limiting + thermal shutdown features for overload immunity. Implementing this device at point-of-source removes the complexity of single point regulation methods + reduces noise. In replacement of a Zener diode/resistor combination, the device improves output impedance by x2 order of magnitude and delivers lower bias current with lower noise. The 79L05 can also be used with power-pass elements to make high-current voltage regulators.

## Features:

- $\pm 5\%$   $V_{OUT}$  tolerance over entire temperature range
- 100mA Output Current
- Internal thermal overload protection
- Internal short circuit current limit
- Full Military Temperature Range
- Positive Voltage complement is 78L05AC

## Ordering Information

The following part suffixes apply:

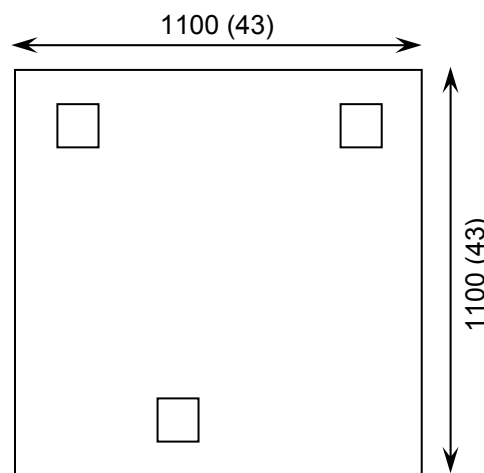
- No suffix - MIL-STD-883 /2010B Visual Inspection
- "H" - MIL-STD-883 /2010B Visual Inspection  
+ MIL-PRF-38534 Class H LAT
- "K" - MIL-STD-883 /2010A Visual Inspection (Space)  
+ MIL-PRF-38534 Class K LAT

LAT = Lot Acceptance Test.

For further information on LAT process flows see below.

[www.siliconsupplies.com/quality/bare-die-lot-qualification](http://www.siliconsupplies.com/quality/bare-die-lot-qualification)

## Die Dimensions in $\mu\text{m}$ (mils)



## Supply Formats:

- Default - Die in Waffle Pack (400 per tray capacity)
- Sawn Wafer on Tape – On request
- Unsawn Wafer – On request
- With Ti/Ni/Ag Back Metal – On request
- In Metal or Ceramic package – On request

## Mechanical Specification

Die Size (Unsawn)	1100 x 1100 43 x 43	$\mu\text{m}$ mils
Minimum Bond Pad Size	116 x 116 4.57 x 4.57	$\mu\text{m}$ mils
Die Thickness	280 ( $\pm 20$ ) 11 ( $\pm 0.8$ )	$\mu\text{m}$ mils
Top Metal Composition	Al 1%Si 1.4 $\mu\text{m}$	
Back Metal Composition	N/A – Bare Si	



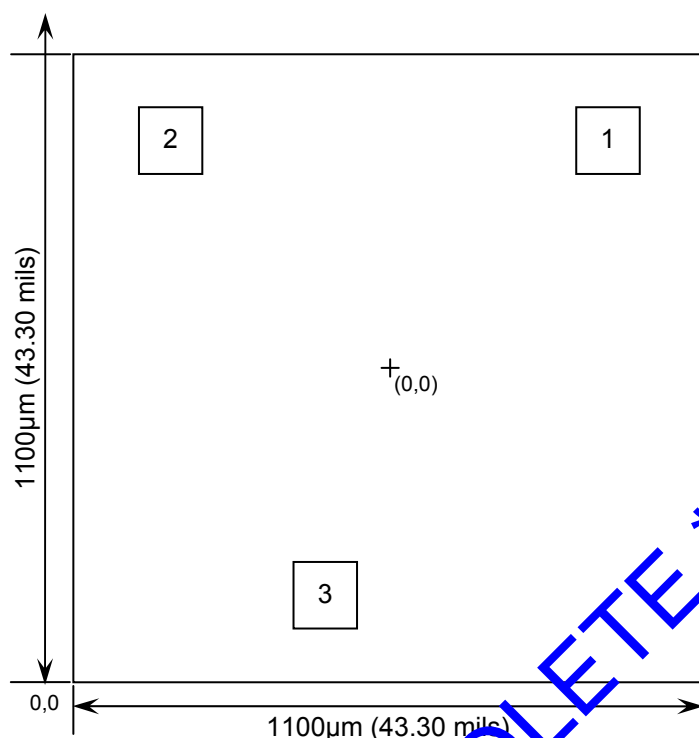


# Linear Voltage Regulator – 79L05AC

Rev 1.0

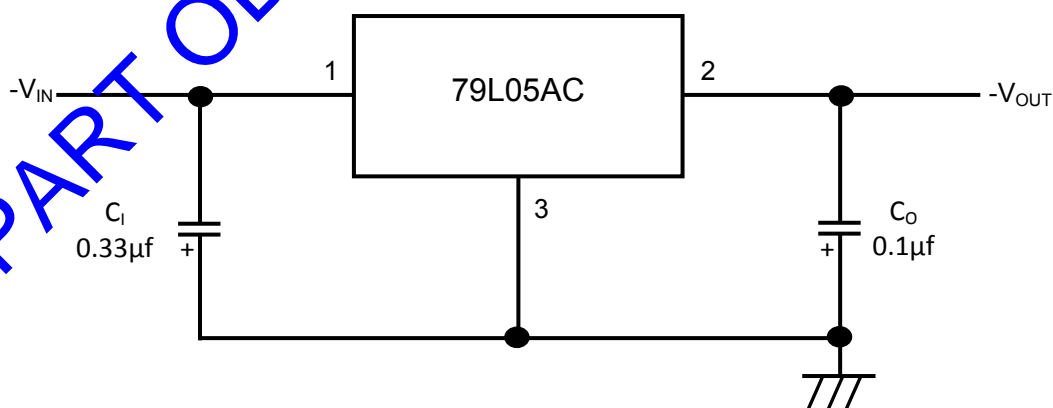
11/15/19

## Pad Layout and Functions



PAD	FUNCTION	COORDINATES (µm)	
		X	Y
1	-V <sub>IN</sub>	-382	397
2	-V <sub>OUT</sub>	-382	397
3	GND	-110	-397
CONNECT CHIP BACK TO V <sub>IN</sub>			

## Typical Application



$C_I$  is required if the regulator is located an appreciable distance from power supply filter.  $C_O$  is not required for stability; however it does improve transient response. For optimum stability and transient response locate  $C_I$ ,  $C_O$  as close as possible to the regulator.





# Linear Voltage Regulator – 79L05AC

Rev 1.0

11/15/19

## Absolute Maximum Ratings

PARAMETER	SYMBOL	VALUE	UNIT
Input Voltage	$V_{IN}$	-30	V
Power Dissipation <sup>1</sup>	$P_D$	620	mW
Operating Temperature Range	-	-55 to 125	°C
Maximum Junction Temperature	$T_J$	150	°C
Storage Temperature	$T_{STG}$	-65 to 150	°C

## Recommended Operating Conditions

PARAMETER	SYMBOL	MIN	MAX	UNIT
Input Voltage	$V_{IN}$	-7	-20	V
Output Current	$I_{OUT}$		100	mA
Operating Temperature Range	$T_J$	-55	125	°C

## DC Electrical Characteristics $V_I = -10V, I_{OUT}=40mA, C_I=0.33\mu F, C_O=0.1\mu F, 0^\circ C < T_J < +125^\circ C$ (unless noted otherwise)

PARAMETER	SYMBOL	TEST CONDITIONS	MIN	TYP	MAX	UNITS
Output Voltage	$V_{OUT}$	$T_J = 25^\circ C, I_O = 40mA$	-4.80	-5.00	-5.20	V
		$1mA \leq I_{OUT} \leq 40mA, -7V \leq V_{IN} \leq -20V$	-4.75	-5.00	-5.25	
		$1mA \leq I_{OUT} \leq 70mA, V_{IN} = -10V$	-4.75	-5.00	-5.25	
Line Regulation	$\Delta V_{OUT}$	$-7V \leq V_{IN} \leq -20V, T_J = 25^\circ C, I_O = 40mA$	-	32	150	mV
		$-8V \leq V_{IN} \leq -20V, T_J = 25^\circ C, I_O = 40mA$	-	26	100	
Load Regulation	$\Delta V_{OUT}$	$1mA \leq I_{OUT} \leq 100mA, T_J = 25^\circ C$	-	15	60	
		$1mA \leq I_{OUT} \leq 40mA, T_J = 25^\circ C$	-	8	30	
Input Bias Current	$I_B$	$T_J = 25^\circ C$	-	3.8	6.0	mA
		$T_J = 125^\circ C$	-	-	5.5	
Input Bias Current Change	$\Delta I_B$	$-8V \leq V_{IN} \leq -20V$	-	-	1.5	mA
		$1mA \leq I_{OUT} \leq 40mA$	-	-	0.1	
Output Noise Voltage	$e_N$	$10Hz \leq f \leq 100KHz, T_J = 25^\circ C$	-	40	-	$\mu V_{RMS}$
Ripple Rejection	RR	$f = 120Hz, -8V \leq V_{IN} \leq 18V, T_J = 25^\circ C$	41	49	-	dB
Dropout Voltage	$V_D$	$V_{IN} - V_{OUT}$	-	1.7	-	V

1. Value measured in TO-92 package applicable only for DC power dissipation permitted by absolute maximum ratings. Results in die form are dependent on die attach and assembly method.





# Linear Voltage Regulator – 79L05AC

Rev 1.0

11/15/19

**\*\*\* PART OBSOLETE \*\*\* - DISCONTINUED**

**DISCLAIMER:** The information given in this document shall in no event be regarded as a guarantee of conditions or characteristics. With respect to any examples or hints given herein, any typical values stated herein and/or any information regarding the application of the device, Silicon Supplies Ltd hereby disclaims any and all warranties and liabilities of any kind.

**LIFE SUPPORT POLICY:** Silicon Supplies Ltd components may be used in life support devices or systems only with the express written approval of Silicon Supplies Ltd, if a failure of such components can reasonably be expected to cause the failure of that life support device or system or to affect the safety or effectiveness of that device or system. Life support devices or systems are intended to be implanted in the human body or to support and/or maintain and sustain and/or protect human life. If they fail, it is reasonable to assume that the health of the user or other persons may be endangered.

